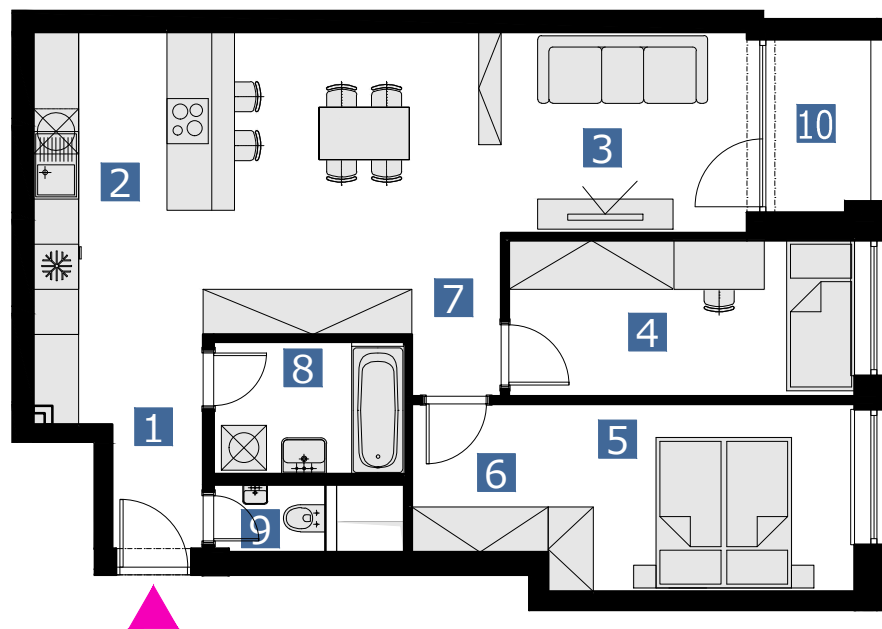


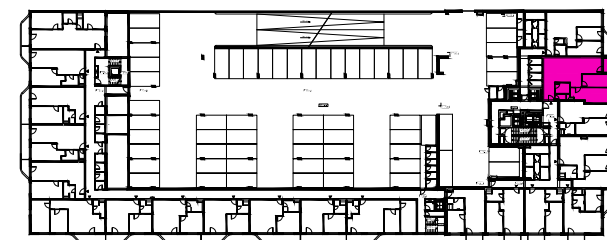
## BYT 3BMT / FLAT 3BMT

### 3 izbový byt / 3 rooms flat



1. vstupná predsieň	/lobby	0 5, 1 7 m <sup>2</sup>
2. kuchyňa	/kitchen	1 9, 7 0 m <sup>2</sup>
3. obývacia izba	/living room	0 9, 1 1 m <sup>2</sup>
4. izba	/bedroom	0 9, 5 4 m <sup>2</sup>
5. izba	/bedroom	1 0, 1 9 m <sup>2</sup>
6. šatník	/wardrobe	0 3, 5 8 m <sup>2</sup>
7. chodba	/corridor	0 6, 5 1 m <sup>2</sup>
8. kúpeľňa	/bathroom	0 4, 4 6 m <sup>2</sup>
9. wc	/wc	0 2, 2 7 m <sup>2</sup>
10. loggia	/loggia	0 3, 1 8 m <sup>2</sup>

**CELKOVÁ PLOCHA /TOTAL 70,53 m<sup>2</sup>**



s c h é m a p ô d o r y s u 3 . N P  
/ s c h e m e o f t h e t h i r d f l o o r



0 1 2 3 4 5 6 M 1:100

pôdorys je spracovaný na marketingové účely | zariadenie predmety a ich rozmiestnenie má len ilustračný charakter  
floor plan is processed for marketing purposes | furniture and its placement is only for illustration