

APARTMÁN 4VMT / APARTMENT 4VMT

2 izbový apar. / 2 rooms apar.

1. vstupná predsieň	/lobby	04,19 m ²
2. wc	/wc	01,62 m ²
3. kúpeľňa	/bathroom	04,23 m ²
4. izba	/bedroom	14,07 m ²
5. obývacia izba	/living room	12,80 m ²
6. kuchyňa	/kitchen	14,42 m ²
7. balkón	/balcony	06,71 m ²

CELKOVÁ PLOCHA /TOTAL **51,33 m²**

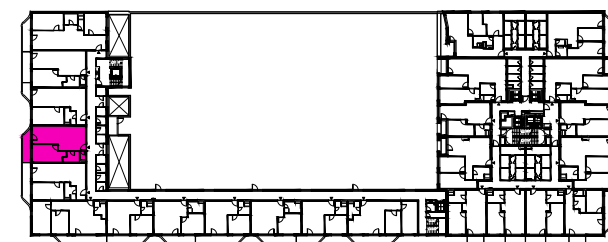
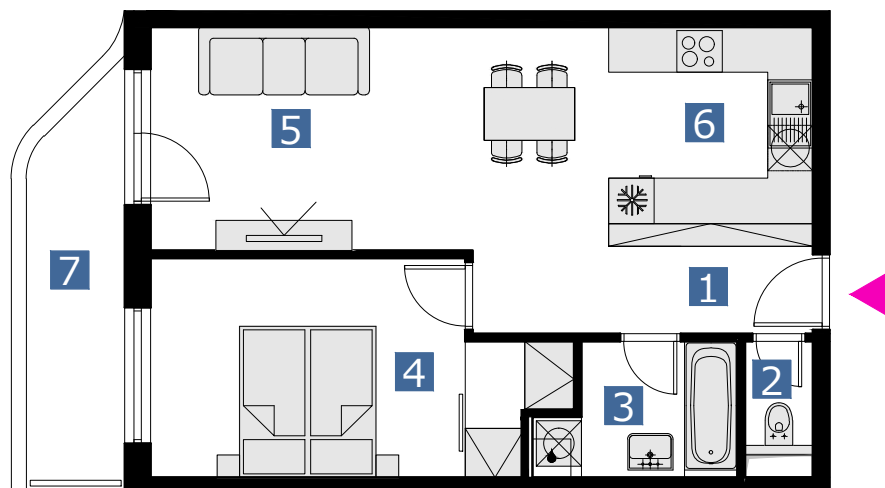
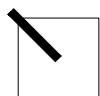


schéma pôdorysu 4. NP
/ scheme of the fourth floor



0 1 2 3 4 5 6 M 1:100

pôdorys je spracovaný na marketingové účely | zaria d'ovacie predmety a ich rozmiestnenie má len ilustračný charakter
floor plan is processed for marketing purposes | furniture and its placement is only for illustration