

## BYT 3LMT / FLAT 3LMT

### 2 izbový byt / 2 rooms flat

1. vstupná predsieň	/lobby	04,22 m <sup>2</sup>
2. kúpeľňa s wc	/bathroom	04,11 m <sup>2</sup>
3. izba	/bedroom	11,10 m <sup>2</sup>
4. obývacia izba	/living room	11,71 m <sup>2</sup>
5. kuchyňa	/kitchen	08,17 m <sup>2</sup>
6. balkón	/balcony	05,11 m <sup>2</sup>

**CELKOVÁ PLOCHA** /TOTAL **39,31 m<sup>2</sup>**

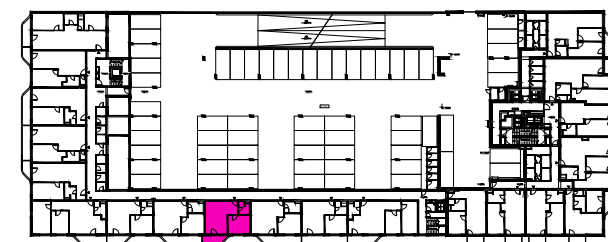
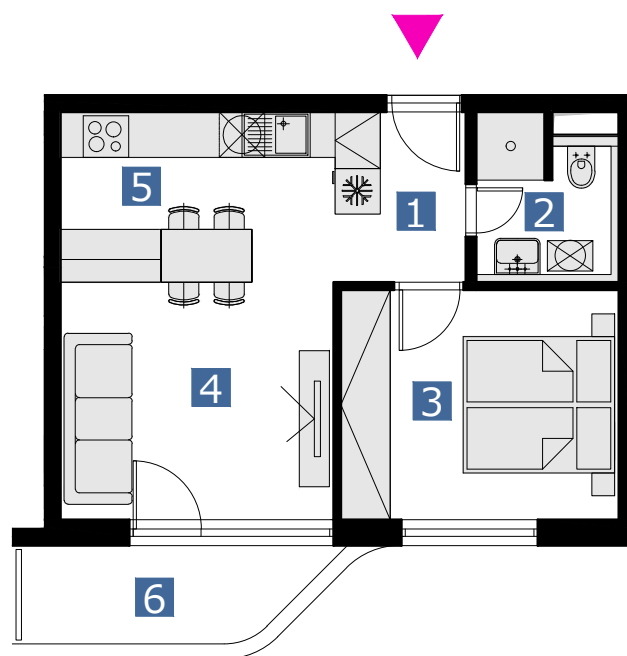


schéma pôdorysu 3. NP  
/ scheme of the third floor



0 1 2 3 4 5 6

M 1:100

pôdorys je spracovaný na marketingové účely | zariadenie predmety a ich rozmiestnenie má len ilustračný charakter  
floor plan is processed for marketing purposes | furniture and its placement is only for illustration